



water solutions

CASE HISTORY

# High efficiency in Pingshan power plant

PINGSHAN POWER PLANT IN ANHUI PROVINCE

## Situation

In accordance with the hydrological features in Huaibei area, Pingshan Power plant will have great water supply volume consumed. Therefore, the water pumping issue from the station to the water treatment plant calls for an urgent solution for the benefit of the plant's long-term application.

Moreover, the coal-fired units adopted by the power plant are equipped with the desulphurization equipment for the sake of the environmental protection, which requires more stable water lifting system.

## Solution

By installing Zenit high-efficient UNIQA for total 4 pieces. Under the team work of the after-sales service staff, the 4 UNIQA were successfully hoisted and installed into the pumping station.

Product adopted: ZUG OC200G 132/4AW 460

Zenit helped completing the transportation, the hoisting, the installation and the test of the products.

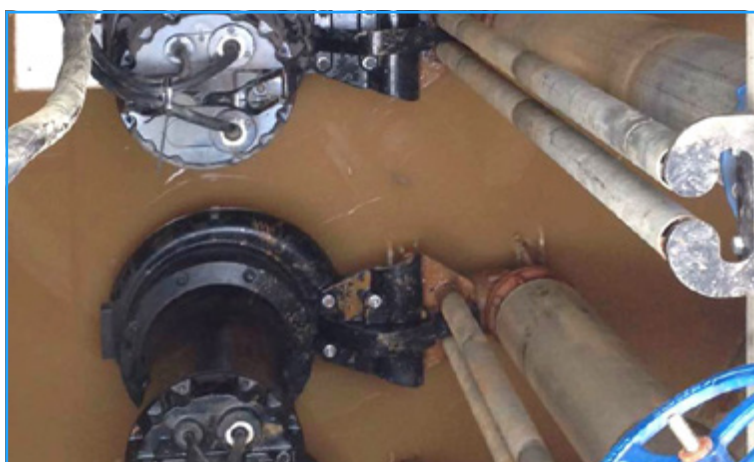
## Benefits

The application of UNIQA could elevate the efficiency of plant's water system and lower the consumption of the energy both.

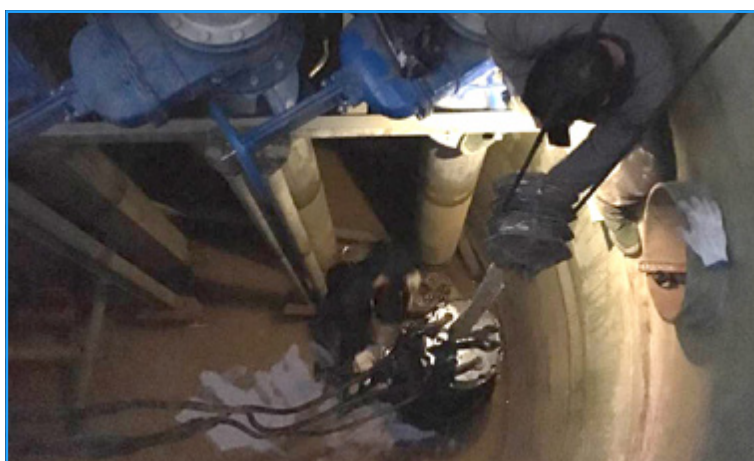
Besides, the effective IE3 motor plus excellent hydraulic performances help customers realize the tremendous savings on the operation cost.



Pump hoisting



Pump installation into pumping station



Pump couplings

Customer	Nanjing Leshui mechanical and electrical technology Co. , LTD			
Company Profile	The construction co-financed by Shenergy Group, Huaibei Mining Co., Ltd and Anhui Energy Group Co.,Ltd			
Location	Suixi County in Huaibei City	Country	China	Area Anhui Province
Application	Pingshan Power Plant			
Installed Products	ZUG OC200G 132/4AW 460			
Date	December 2015			